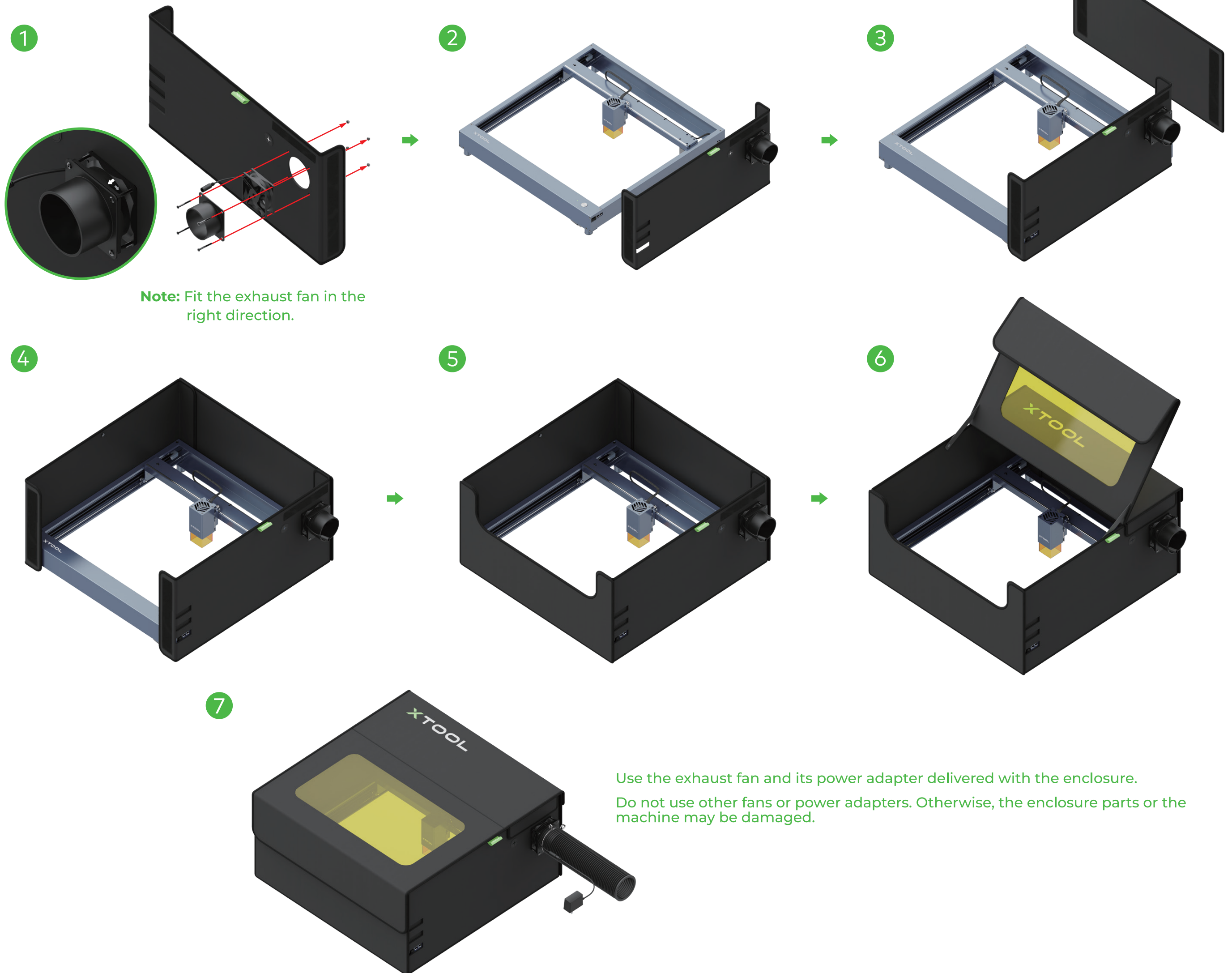


Assemble the enclosure



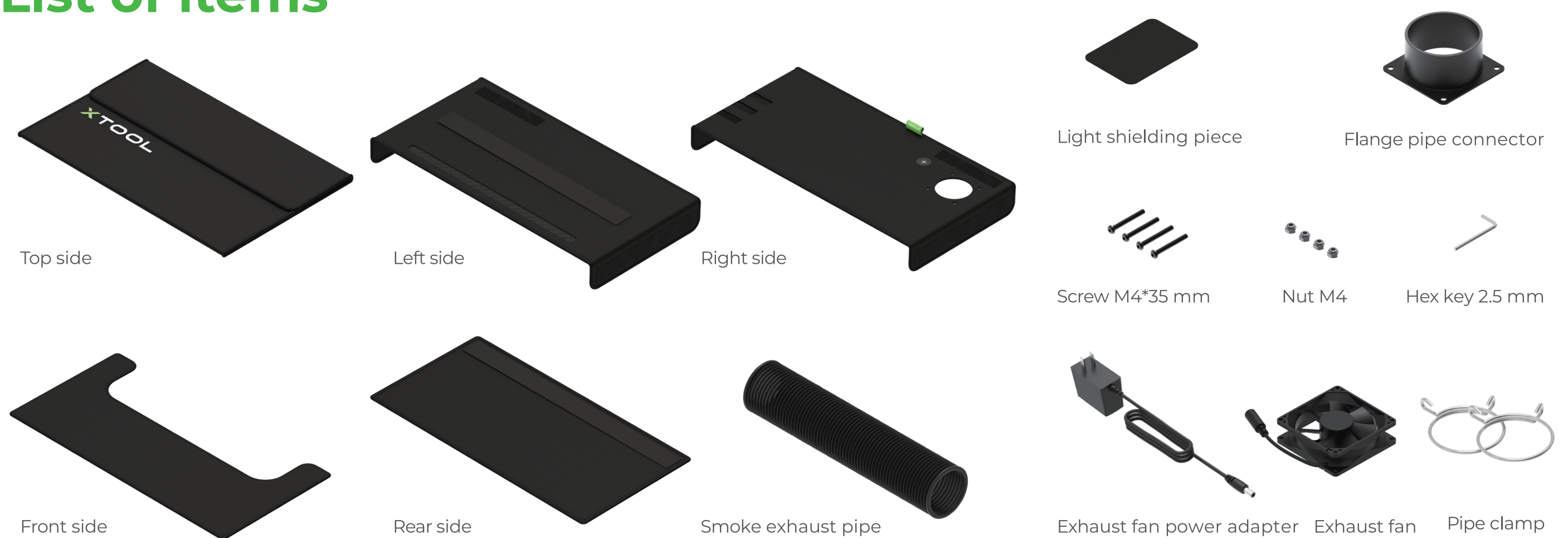
XTOOL

Portable Enclosure Assembly Guide

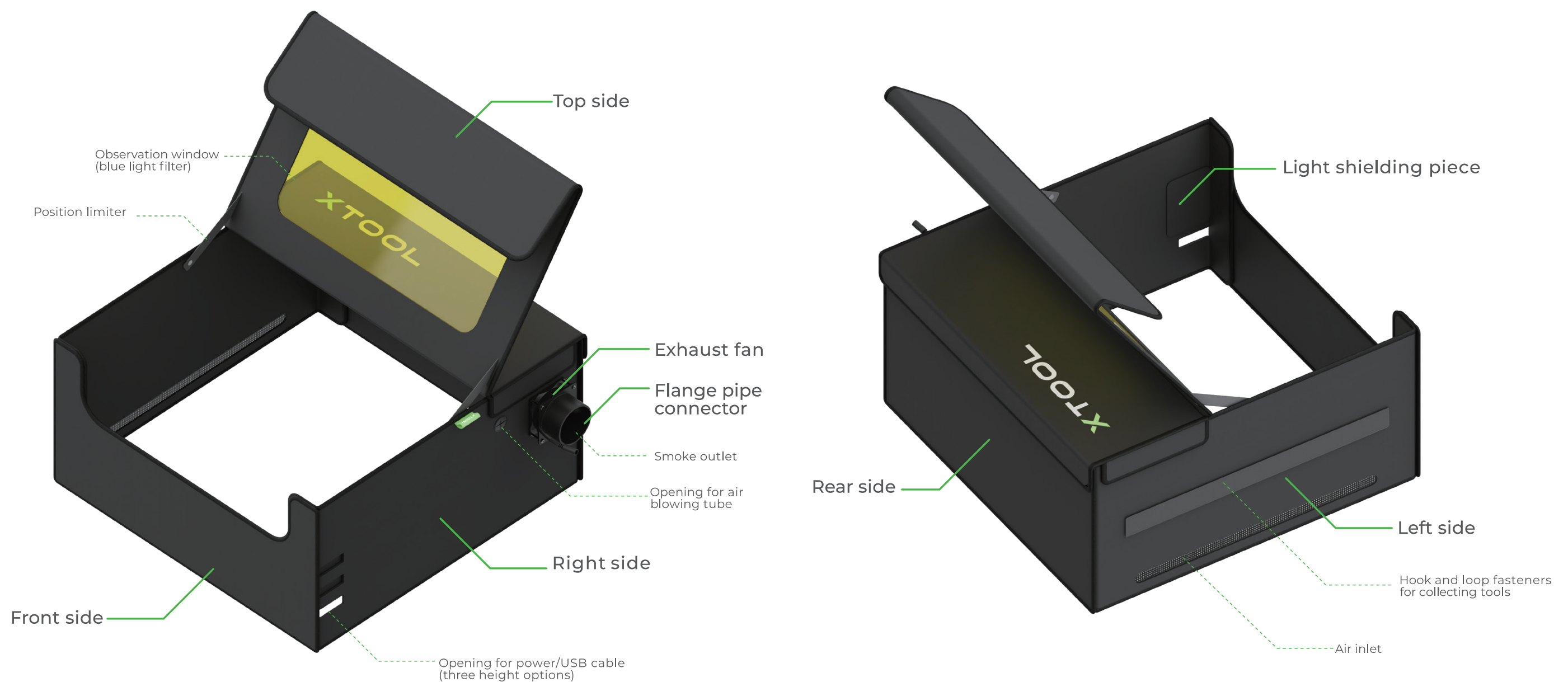
XTOOL



List of items



Meet the enclosure



Precautions

- The portable enclosure is applicable only to isolate you from and exhaust the smoke and fumes generated during laser cutting and engraving. Do not use it for other purposes.
- The enclosure is made of flame-retardant materials, but it can't completely keep flames from spreading. Do not leave the machine unattended during laser processing.
- The blue light filter of the observation window can filter out most of the blue laser beams, but the high-intensity beams may still hurt your eyes. It is recommended that you wear a pair of professional laser safety goggles during observation.
- When fitting the sides, ensure that the bright sides face outward and the dull ones face inward.
- The enclosure may be damaged when being pressed or scraped. Handle it with care.